

# Breast Augmentation

*Natural Look, Perfect Volume!*

## BREAST AUGMENTATION SURGERY OVERVIEW

Breast augmentation, also known as breast implant surgery, is a cosmetic procedure that enhances the size, volume, and fullness of the breasts using silicone or saline implants. It is one of the most commonly performed aesthetic surgeries worldwide and is typically chosen to improve breast size, symmetry, or to increase volume in breasts with insufficient tissue.

# OPTIONS OF BREAST AUGMENTATION

---



## TYPES OF BREAST IMPLANTS BY MATERIAL

---

**Silicone Implants:** Filled with cohesive silicone gel, providing a natural look and feel. Lower rippling risk, most commonly preferred.

**Gummy Bear (Highly Cohesive) Implants:** Contain form-stable gel that maintains shape even if cut or ruptured. Provide firmer, more stable, and anatomically shaped results with reduced rupture risk.

## TYPES OF BREAST IMPLANTS BY SHAPE

---

**Round Implants:** Add fullness to the upper breast, creating a lifted and more voluminous look. Ideal for women seeking a bolder, more noticeable enhancement.

**Teardrop (Anatomical) Implants:** Designed with more volume at the bottom and a gentle slope at the top for a natural breast shape. Preferred for subtle, natural-looking results.

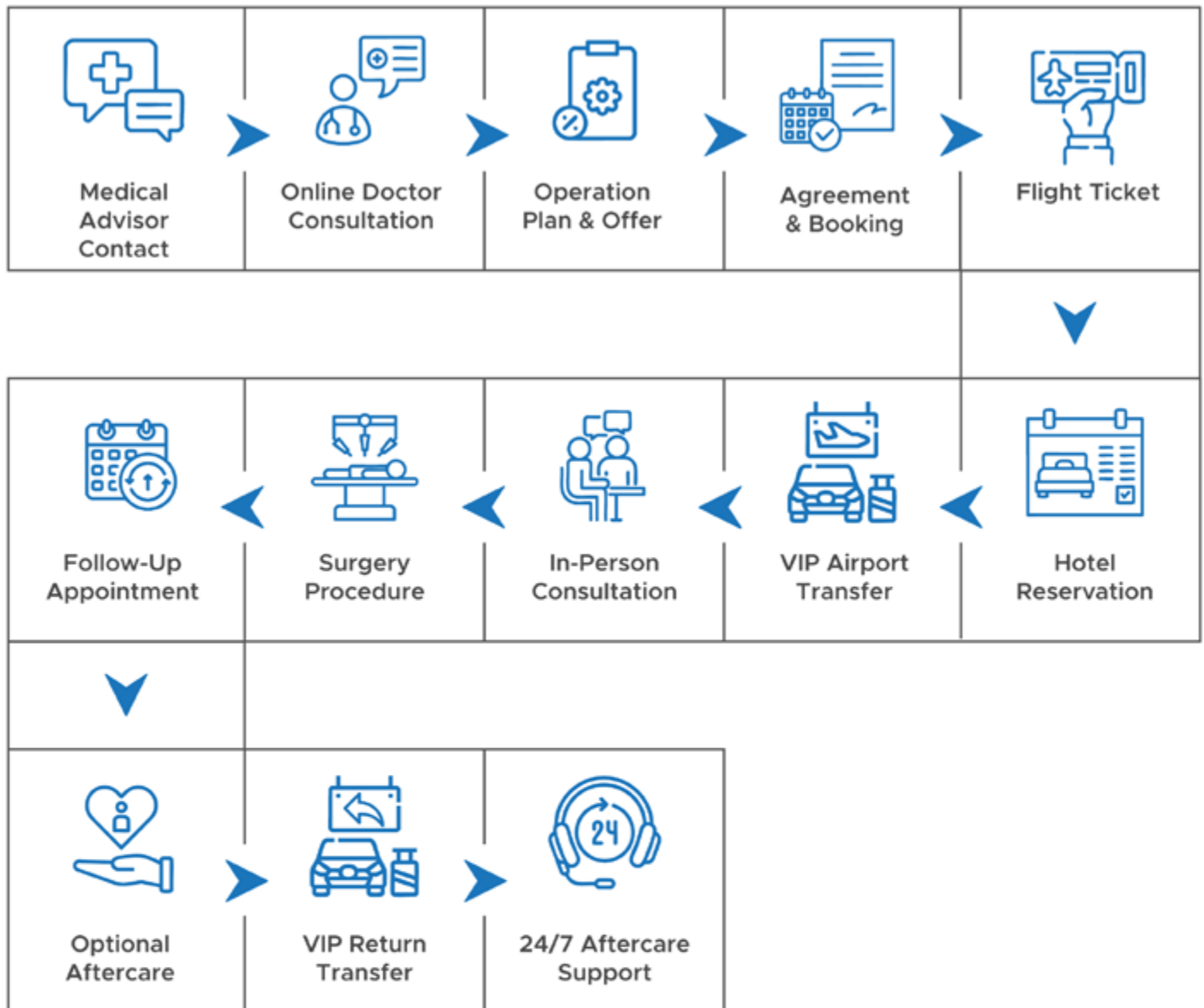
## TYPES OF BREAST IMPLANTS BY SURFACE

---

**Smooth Implants:** Soft surface that moves naturally within the breast pocket, giving a natural feel. Slightly higher risk of implant shifting.

**Textured Implants:** Rough surface helps the implant stay in place and reduces the risk of capsular contracture. Commonly used with teardrop implants to prevent rotation.

# STEP-BY-STEP OPERATION GUIDE

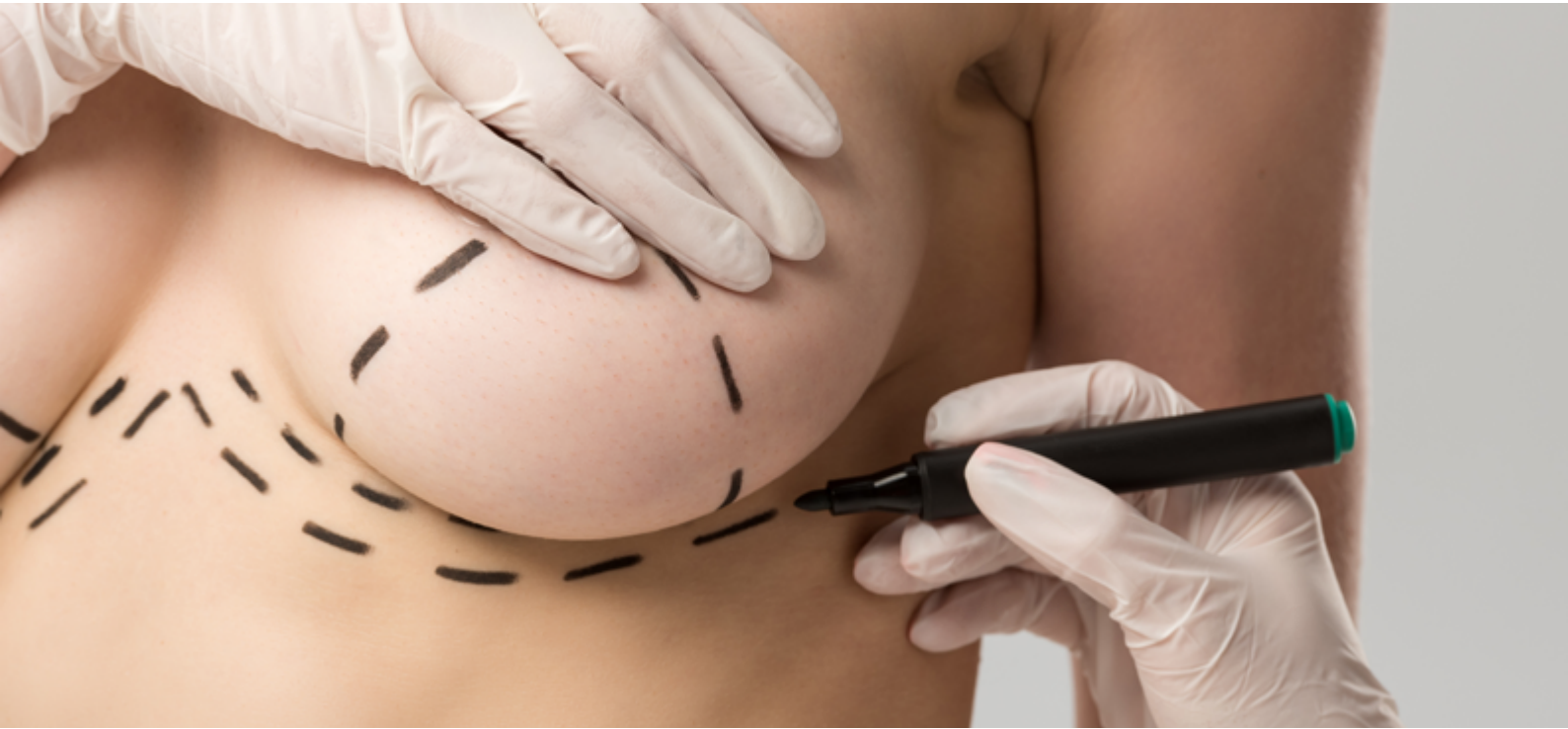


## OPERATION PROCESS

			
Total Stay 5-7 Nights	Operation Duration 2-4 Hours	Anesthesia Type General	Techniques Anatomical / Round

# BREAST AUGMENTATION WITH IMPLANTS PROCEDURE

---



## **Pre-Surgery Preparation**

Consultation, medical tests, and implant selection (silicone, gummy bear; round or teardrop; submuscular or subglandular).

## **Anesthesia**

General anesthesia is used.

## **Incision Options**

- Inframammary (most common)
- Periareolar
- Transaxillary (endoscopic)

## **Implant Placement**

Placed with consideration for symmetry and natural movement.

## **Closure & Dressing**

Absorbable sutures, surgical tape, dressings, and a supportive bra are applied.

## **Post-Surgery Care**

A short observation period; most patients are discharged after one overnight stay. The surgeon provides aftercare instructions.

# RECOVERY PROCESS AFTER BREAST AUGMENTATION

---



## **First 24-48 Hours:**

Mild swelling, tightness, and discomfort. Pain managed with prescribed medication.

## **First Week:**

Compression bra must be worn 24/7 to support healing. Avoid strenuous activity and heavy lifting.

## **2-3 Weeks:**

Swelling gradually decreases. Patients can resume daily activities (with restrictions).

## **4-6 Weeks:**

Full return to exercise and normal activities. Breasts begin to settle into their natural shape.

## **3-6 Months:**

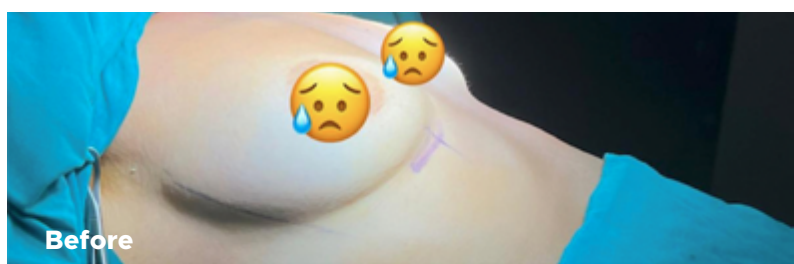
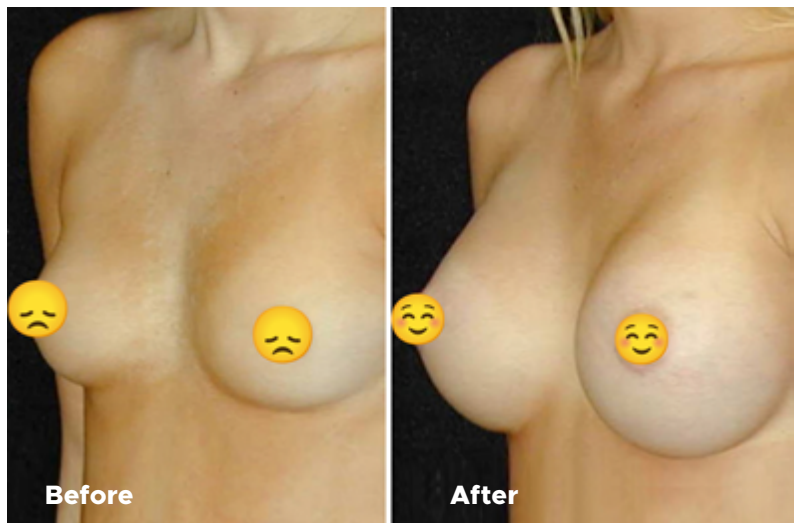
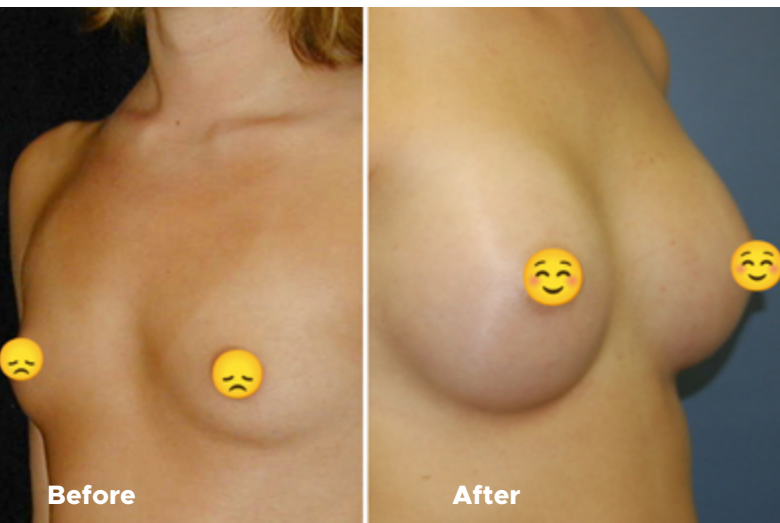
Final results become visible as implants settle into position.

## **12 Months:**

Surgical scars begin to fade and become largely invisible.

# BREAST AUGMENTATION BEFORE / AFTER

---





---

Phone and WhatsApp

EN: **+90 549 177 40 07**

RU: **+90 530 070 39 14**

---

[info@mtturkey.com](mailto:info@mtturkey.com)

---

[www.mtturkey.com](http://www.mtturkey.com)

---

RIXOS DOWNTOWN HOTEL

Meltem Mh. Sakıp Sabancı Blv. No:3B Antalya TÜRKİYE